

HUB LABELS CANNABIS PROGRAM



program highlights

- optional built in tamper-seal
- over print lam for TT Epson Printer
- easily recycle container
- order pick-ups available in Hagerstown
- 2 week turn time w/ in stock material
- 95% on time delivery
- made in Maryland



sustainable goals met

- more on rolls
- smaller footprint
- reduced shipping cost



materials and sizes for...

tinctures
edibles
bags
topicals
concentrates
house packed flower
pre-packed flower
vapes/ pre-roll tubes

- one label for multiple sourced packages
- Epson Authorized Dealer to print your own labels
- blank labels cut to size

label specs ↪

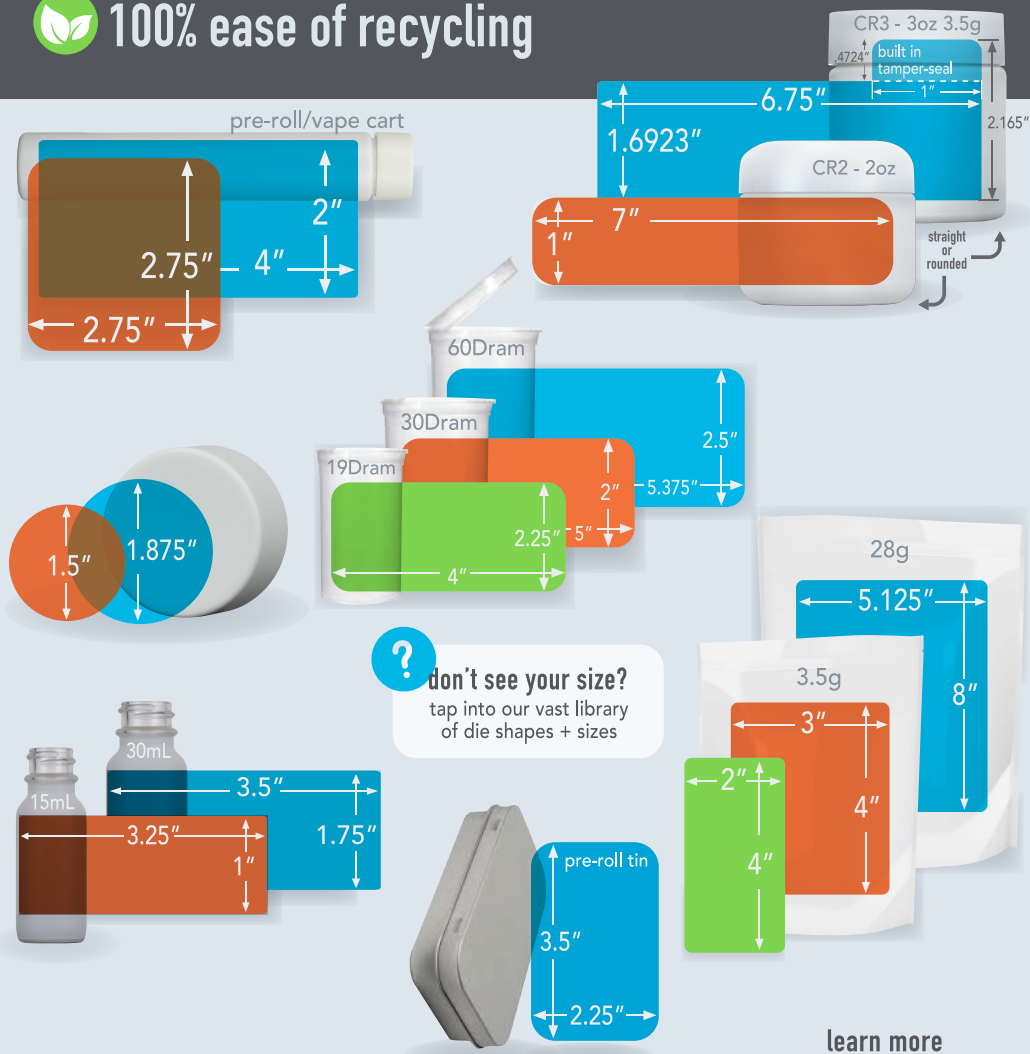
profile:

50% white bopp facestock on PET liner

50% gloss lamination overprint thermal transfer



100% ease of recycling



don't see your size?

tap into our vast library
of die shapes + sizes



sizes, adhesives, and materials for...

clear glass/ non-painted surface (frosted/matte,
rough, painted surfaces require upgraded adhesive)

plastic (PET#, HDPE)

mylar (glossy or matte)

secondary printing on TT w/ Epson Printer

matte film available

learn more
about Hub



we're the
label experts
so you don't
have to be!

hub labels. rolling out dope labels since 1978.
get in touch today: 301-790-1660